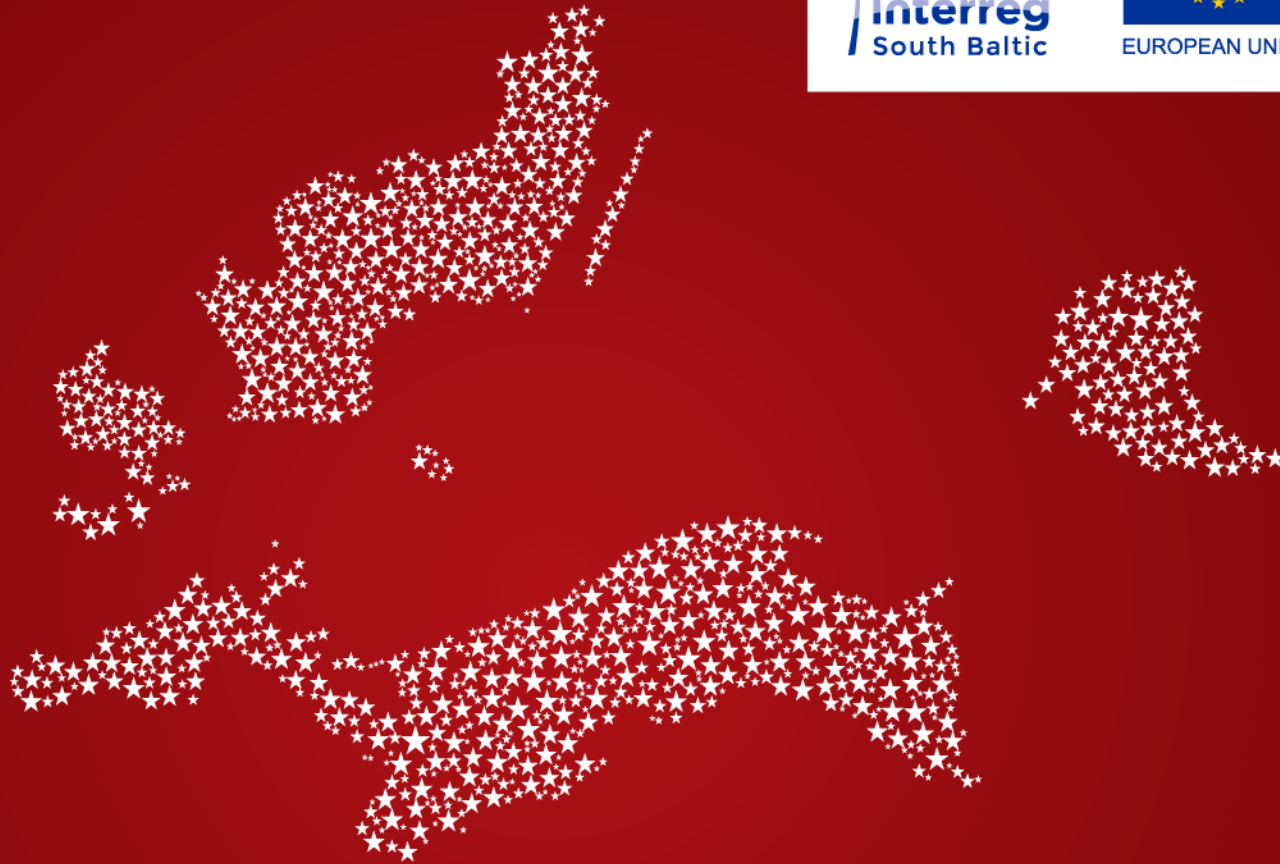




European  
Regional  
Development  
Fund



---

# Using Interreg South Baltic funds

for a skilled labour force

# How can you engage?

- Your organisation has a legal personality;
- Your organisation is based in the eligible area (*in exceptional and well-justified cases, project partners can be located outside the eligible Programme area; see section III.2 of the Programme Manual*);
- Your organisation faces a challenge related to the need of applying a green technology;
- The challenge / opportunity requires joint actions across borders;
- The joint action can be accomplished by your organisation and your partner organisation(s) from (an)other Member State(s);
- The joint action will be carried out in the Programme eligible area;
- The joint action corresponds with a Programme specific objective.



@SouthBaltic




SouthBaltic



[www.southbaltic.eu/skills](http://www.southbaltic.eu/skills)

# What is specific objective 4?

- Can you help Interreg South Baltic to increase the share of skilled labour force working in blue and green economy sectors of the South Baltic area through joint cross-border actions?
- What we are looking for are cross-border employment schemes (i.e. services, model solutions, tools and programmes) as well as joint training schemes supporting employment in the blue and green economy of the South Baltic area.



*What are  
Programme  
specific  
objectives?*



@SouthBaltic



SouthBaltic



[www.southbaltic.eu/skills](http://www.southbaltic.eu/skills)

# How much funding is available?

- The Programme provides co-financing from the European Regional Development Fund (ERDF) for cooperation activities between two or more organisations from at least two participating Member States;
- The funds available for the development of a skilled labour force amount to ca. 8,3 M EUR;
- The co-financing rate for Polish, Lithuanian and German beneficiaries is up to 85% of their eligible project costs;
- Swedish and Danish beneficiaries receive up to 75% of ERDF co-financing;
- The ERDF co-financing is paid on the basis of semi-annual reimbursements.



@SouthBaltic



SouthBaltic



[www.southbaltic.eu/skills](http://www.southbaltic.eu/skills)

# Who can receive funding?

The following types of organisations can form partnerships and submit applications (non-exhaustive list):

- Local and regional authorities and their associations;
- Labour offices and labour market administration;
- Labour unions and employer organisations;
- Educational and R&D institutions;
- Formal associations, clusters and networks of SMEs (having legal personality);
- Chambers of commerce, business development agencies and other business support organisations;
- NGOs involved in the training and qualifications of the labour force.



@SouthBaltic

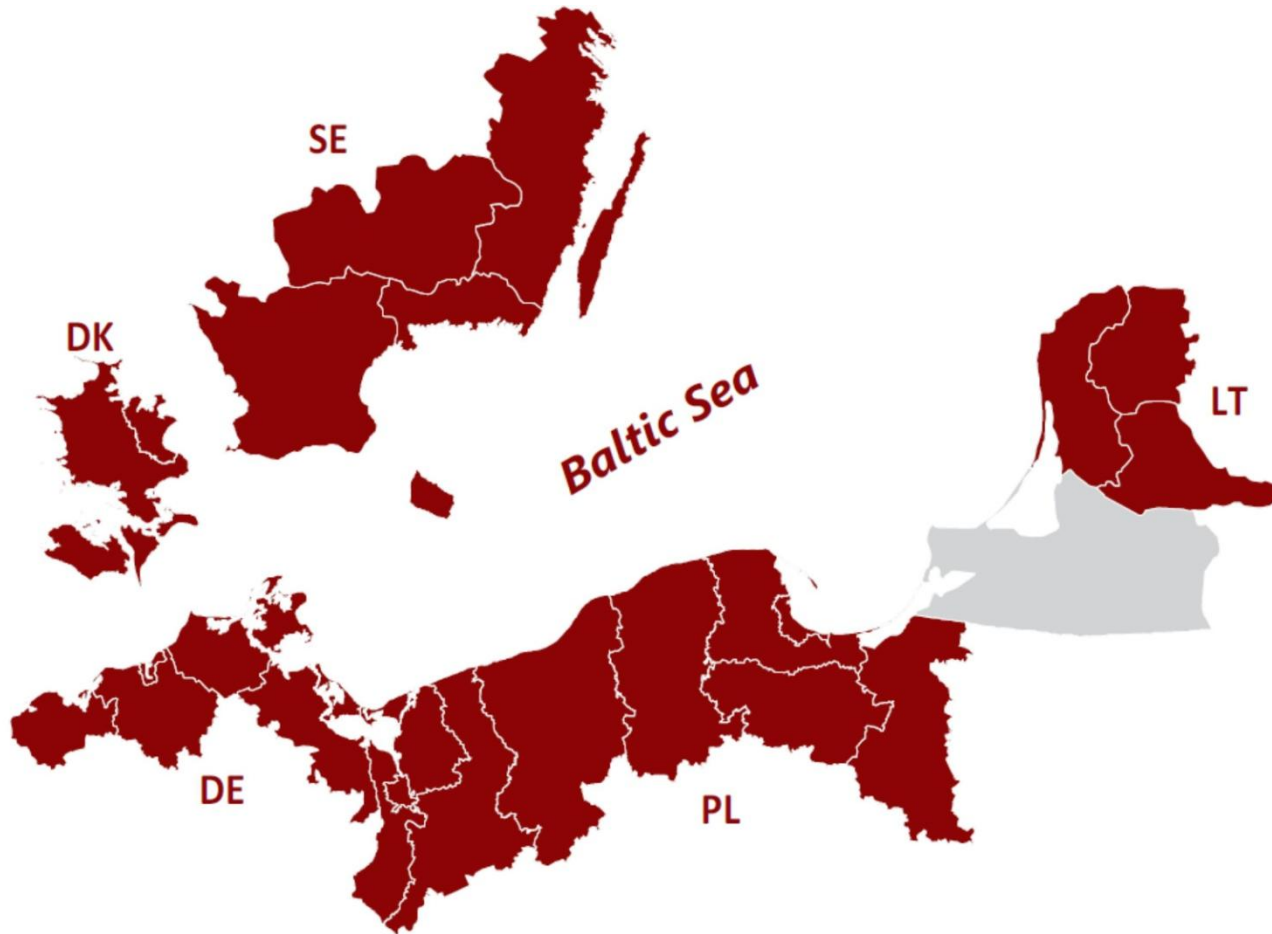


SouthBaltic



[www.southbaltic.eu/skills](http://www.southbaltic.eu/skills)

# Which regions are eligible?



@SouthBaltic



SouthBaltic



[www.southbaltic.eu/skills](http://www.southbaltic.eu/skills)

# Which regions are eligible?

- **in Denmark:**  
Regional Municipality of Bornholm and Region Zealand (subregions: Østsjælland, Vest- og Sydsjælland);
- **in Germany:**  
districts (Landkreise) of Mecklenburg-Vorpommern: Nordwestmecklenburg, Rostock, Vorpommern-Rügen, Vorpommern-Greifswald and district-free city (kreisfreie Stadt): Rostock;
- **in Lithuania:**  
counties of Klaipėda, Tauragė and Telšiai;
- **in Poland:**  
subregions of: Miasto Szczecin, Szczeciński, Stargardzki, Koszaliński, Słupski, Starogardzki, Gdański, Trójmiejski and Elbląski;
- **in Sweden:**  
counties of: Kalmar, Blekinge, Skåne and Kronoberg.



@SouthBaltic



SouthBaltic



[www.southbaltic.eu/skills](http://www.southbaltic.eu/skills)

# Why is it beneficial to engage?

By participating in a project you would be able to:

- investigate best practices and exchange knowledge and experience related to human resource capacities for the area's blue and green economy;
- cooperate with partners and jointly develop tailored solutions for boosting human resource capacities for the area's blue and green economy;
- test innovative methods and tools;
- form international networks with organisations pursuing the same mission;
- experience the cross-sector cooperation possibilities in an international setting.



@SouthBaltic



SouthBaltic



[www.southbaltic.eu/skills](http://www.southbaltic.eu/skills)



# How to build a project?

## Intervention logic explained ...

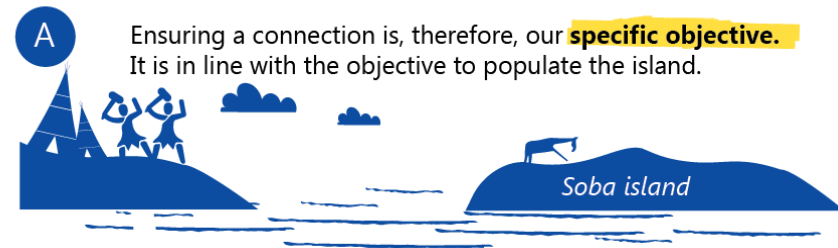
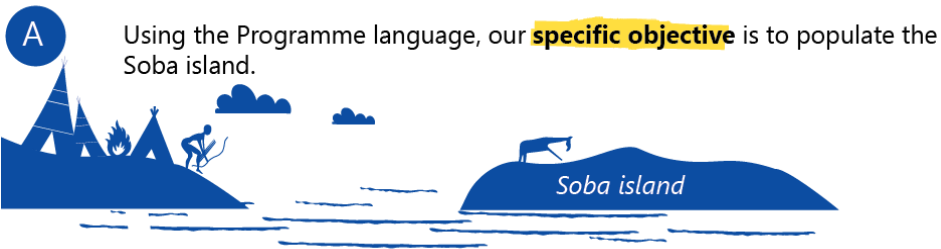


### Programme level

We are a blue-green tribe living by the sea. Our population is growing rapidly, and we need to find somewhere else to live. Using the Programme language this is our **challenge**. Next to our territory, there is an island called Soba that is not populated. Due to the growth of our tribe, our elders' council decided to populate the Soba island. In order to implement our plan, we need somebody to help us.

### Project level

We are tribe builders who can ensure a foot connection that would allow to populate the island.



@SouthBaltic



SouthBaltic



[www.southbaltic.eu/skills](http://www.southbaltic.eu/skills)

# How to build a project?

## Intervention logic explained ...

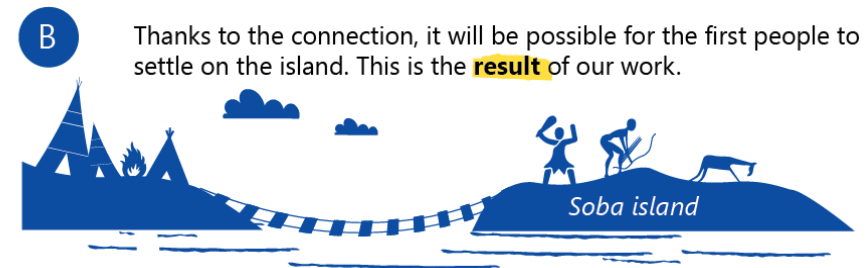


### Programme level

We are a blue-green tribe living by the sea. Our population is growing rapidly, and we need to find somewhere else to live. Using the Programme language this is our **challenge**. Next to our territory, there is an island called Soba that is not populated. Due to the growth of our tribe, our elders' council decided to populate the Soba island. In order to implement our plan, we need somebody to help us.

### Project level

We are tribe builders who can ensure a foot connection that would allow to populate the island.



@SouthBaltic



SouthBaltic



[www.southbaltic.eu/skills](http://www.southbaltic.eu/skills)

# How to build a project?

## Intervention logic explained ...



### Programme level

We are a blue-green tribe living by the sea. Our population is growing rapidly, and we need to find somewhere else to live. Using the Programme language this is our **challenge**. Next to our territory, there is an island called Soba that is not populated. Due to the growth of our tribe, our elders' council decided to populate the Soba island. In order to implement our plan, we need somebody to help us.

### Project level

We are tribe builders who can ensure a foot connection that would allow to populate the island.



In order to achieve this, we need to establish a connection, build facilities on the island such as tents, fire places and others. Using the Programme language, these are the **actions to be supported**.



We plan to build 1 footbridge. Using the language of a project, it is going to be our **output**. It is one of the **actions** that our tribe supports. Before we can do that, we have to make sure that we have plans and materials. These are our **deliverables**. In order to have plans, we need to hire somebody who can draw them. In order to have proper materials, we have to go to the forest and cut wood. In order to have enough people to build the footbridge, we need to recruit them. These are going to be our **activities**.



@SouthBaltic



SouthBaltic



[www.southbaltic.eu/skills](http://www.southbaltic.eu/skills)

# How to start?

- Get in touch with a Contact Point in your region:  
[www.southbaltic.eu/contact-points](http://www.southbaltic.eu/contact-points)
- Get in touch with the Joint Secretariat:  
Małgorzata Skolmowska, Project Officer Skills development,  
Tel. +48 58 746 38 59, [malgorzata.skolmowska@southbaltic.eu](mailto:malgorzata.skolmowska@southbaltic.eu)
- Find partners and project ideas:  
[www.southbaltic.eu/smart-aliance](http://www.southbaltic.eu/smart-aliance)
- Share a project idea for consultation with the Joint Secretariat:  
[www.southbaltic.eu/consultation](http://www.southbaltic.eu/consultation)
- Look for upcoming calls for proposals:  
[www.southbaltic.eu/call-for-proposals](http://www.southbaltic.eu/call-for-proposals)
- Check for possibilities to fund project development activities:  
[www.southbaltic.eu/seed-money](http://www.southbaltic.eu/seed-money)



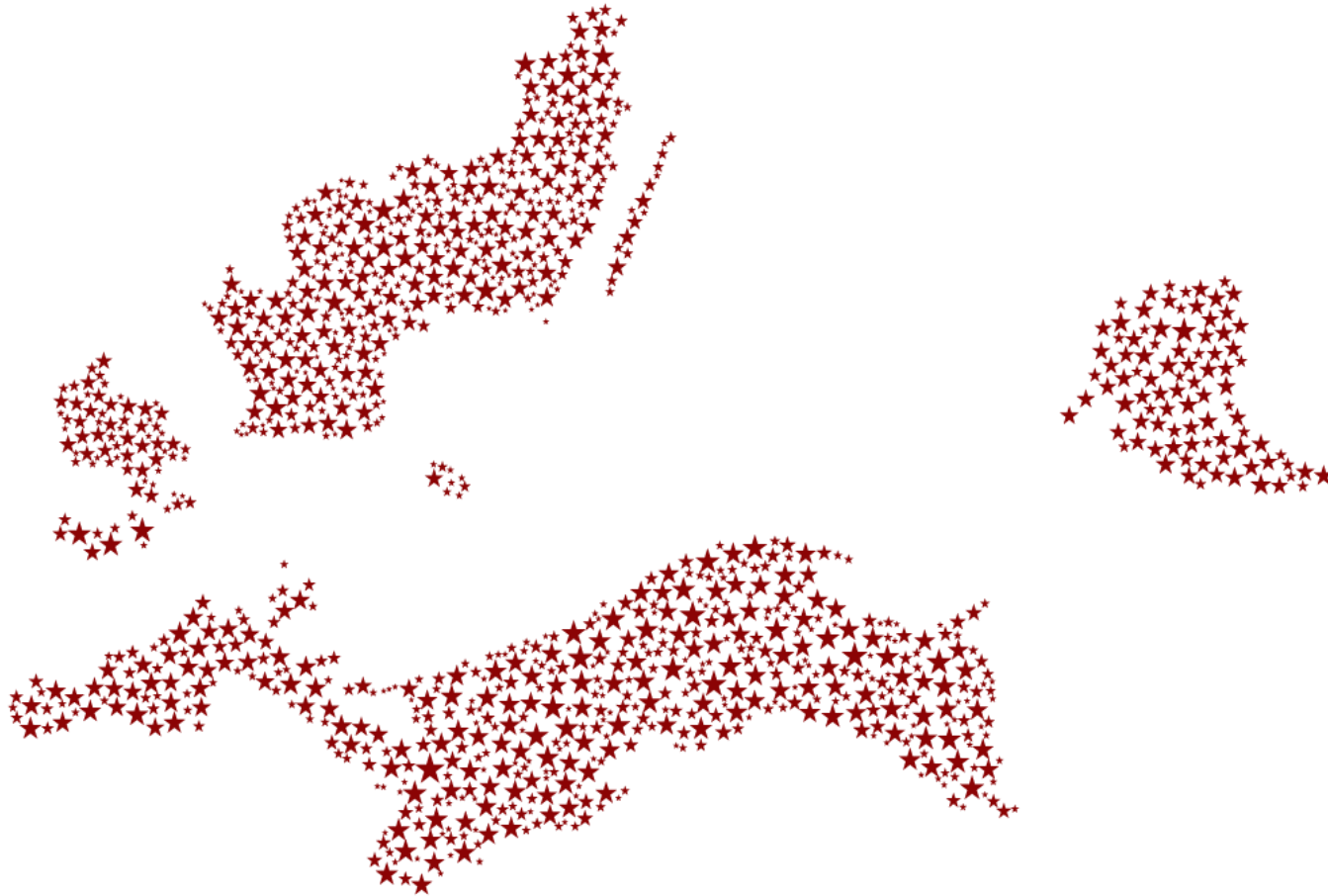
@SouthBaltic



SouthBaltic



[www.southbaltic.eu/skills](http://www.southbaltic.eu/skills)



---

# Thank you!

Małgorzata Skolmowska | Project Officer Skills development  
[malgorzata.skolmowska@southbaltic.eu](mailto:malgorzata.skolmowska@southbaltic.eu)